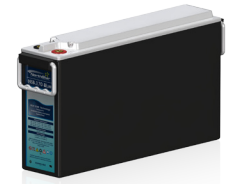


# Performance Table @ 20°C (68°F)

## NSB 170 Blue



### Current / A

Duration		End of Discharge Voltage								
Mins	Hours	1.85	1.80	1.75	1.70	1.67	1.65	1.60	1.55	1.50
2	0.03	388.8	476.8	568.9	660.4	712.7	745.7	819.3	875.7	910.6
5	0.08	346.4	400.6	453.9	504.1	531.7	548.6	585.1	611.5	626.3
10	0.17	274.9	306.1	335.6	362.4	376.7	385.3	403.5	416.1	422.5
15	0.25	228.4	249.4	268.9	286.2	295.3	300.8	312.1	319.7	323.4
20	0.33	196.2	211.6	225.6	238.0	244.4	248.3	256.1	261.4	263.8
30	0.50	154.4	163.8	172.3	179.7	183.4	185.7	190.2	193.1	194.4
45	0.75	118.1	123.7	128.5	132.7	134.8	136.0	138.5	140.1	140.7
60	1	96.3	99.9	103.1	105.8	107.2	108.0	109.5	110.5	110.8
120	2	56.3	57.5	58.5	59.4	59.8	60.1	60.6	60.9	60.9
180	3	40.2	40.8	41.3	41.7	42.0	42.1	42.3	42.5	42.5
240	4	31.3	31.7	32.1	32.3	32.5	32.6	32.7	32.8	32.8
300	5	25.8	26.0	26.3	26.5	26.6	26.6	26.8	26.8	26.8
480	8	16.9	17.1	17.2	17.4	17.4	17.5	17.5	17.6	17.6
600	10	13.8	13.9	14.1	14.2	14.3	14.3	14.4	14.4	14.4
1200	20	7.3	7.4	7.6	7.7	7.7	7.7	7.8	7.8	7.9

### Capacity / Ah

Duration		End of Discharge Voltage								
Mins	Hours	1.85	1.80	1.75	1.70	1.67	1.65	1.60	1.55	1.50
2	0.03	13.0	15.9	19.0	22.0	23.8	24.9	27.3	29.2	30.4
5	0.08	28.9	33.4	37.8	42.0	44.3	45.7	48.8	51.0	52.2
10	0.17	45.8	51.0	55.9	60.4	62.8	64.2	67.2	69.3	70.4
15	0.25	57.1	62.3	67.2	71.5	73.8	75.2	78.0	79.9	80.9
20	0.33	65.4	70.5	75.2	79.3	81.5	82.8	85.4	87.1	87.9
30	0.50	77.2	81.9	86.2	89.8	91.7	92.8	95.1	96.6	97.2
45	0.75	88.6	92.7	96.4	99.5	101.1	102.0	103.9	105.1	105.5
60	1	96.3	99.9	103.1	105.8	107.2	108.0	109.5	110.5	110.8
120	2	112.6	115.0	117.1	118.8	119.7	120.2	121.1	121.7	121.9
180	3	120.5	122.3	123.9	125.2	125.9	126.2	127.0	127.4	127.5
240	4	125.3	126.9	128.3	129.4	129.9	130.2	130.8	131.2	131.3
300	5	128.8	130.2	131.4	132.4	132.9	133.2	133.8	134.1	134.2
480	8	135.1	136.6	137.8	138.8	139.3	139.6	140.2	140.6	140.7
600	10	137.8	139.4	140.8	142.0	142.5	142.9	143.5	143.9	144.1
1200	20	145.9	148.7	151.2	153.3	154.3	154.9	156.2	156.9	157.2

### Power / W per cell

Duration		End of Discharge Voltage								
Mins	Hours	1.85	1.80	1.75	1.70	1.67	1.65	1.60	1.55	1.50
2	0.03	722.1	860.0	999.2	1132.5	1206.5	1252.2	1350.7	1421.3	1459.1
5	0.08	649.2	734.6	816.6	891.9	932.3	956.9	1008.6	1044.4	1062.4
10	0.17	519.0	568.6	614.8	655.9	677.6	690.6	717.5	735.6	744.2
15	0.25	433.1	466.8	497.7	524.7	538.8	547.2	564.4	575.8	580.9
20	0.33	373.4	398.2	420.7	440.2	450.3	456.2	468.4	476.3	479.8
30	0.50	295.2	310.6	324.4	336.2	342.2	345.7	352.9	357.5	359.4
45	0.75	227.1	236.1	244.1	250.9	254.3	256.3	260.3	262.8	263.8
60	1	185.8	191.8	197.0	201.4	203.6	204.9	207.5	209.1	209.6
120	2	109.7	111.6	113.3	114.7	115.3	115.7	116.5	116.9	117.1
180	3	78.8	79.7	80.4	81.0	81.3	81.5	81.8	82.0	82.1
240	4	61.8	62.3	62.7	63.0	63.1	63.2	63.4	63.5	63.6
300	5	51.0	51.3	51.5	51.7	51.8	51.8	51.9	52.0	52.0
480	8	33.8	33.8	33.9	33.9	33.9	34.0	34.0	34.0	34.1
600	10	27.7	27.7	27.7	27.7	27.8	27.8	27.8	27.8	27.9
1200	20	14.9	14.9	14.9	14.9	14.9	14.9	14.9	15.0	15.0