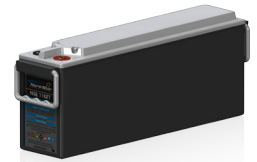


Performance Table @ 25°C (77°F)

NSB 12-450FT



Current / A

Duration		End of Discharge Voltage								
Mins	Hours	1.85	1.80	1.75	1.70	1.67	1.65	1.60	1.55	1.50
2	0.03	532.4	605.9	678.6	748.1	787.1	811.7	866.8	911.2	942.7
5	0.08	383.6	423.0	460.5	495.1	513.9	525.5	550.6	569.7	582.0
10	0.17	269.1	290.1	309.5	326.9	336.1	341.7	353.6	362.1	367.1
15	0.25	210.9	224.5	237.0	247.9	253.6	257.0	264.2	269.2	271.9
20	0.33	174.9	184.7	193.5	201.1	205.1	207.4	212.3	215.6	217.3
30	0.50	131.9	137.8	143.0	147.5	149.7	151.1	153.8	155.5	156.3
45	0.75	97.6	101.0	104.0	106.5	107.7	108.5	109.9	110.8	111.1
60	1	78.0	80.3	82.3	83.9	84.7	85.1	86.0	86.6	86.7
120	2	44.3	45.1	45.8	46.4	46.6	46.8	47.1	47.2	47.2
180	3	31.4	31.9	32.3	32.6	32.7	32.8	33.0	33.0	33.0
240	4	24.5	24.8	25.1	25.3	25.4	25.5	25.6	25.7	25.7
300	5	20.1	20.4	20.7	20.9	20.9	21.0	21.1	21.1	21.1
480	8	13.3	13.5	13.7	13.9	14.0	14.0	14.1	14.1	14.2
600	10	10.9	11.1	11.3	11.5	11.6	11.6	11.7	11.8	11.8
1200	20	6.0	6.2	6.3	6.5	6.6	6.6	6.7	6.8	6.8

Capacity / Ah

Duration		End of Discharge Voltage								
Mins	Hours	1.85	1.80	1.75	1.70	1.67	1.65	1.60	1.55	1.50
2	0.03	17.7	20.2	22.6	24.9	26.2	27.1	28.9	30.4	31.4
5	0.08	32.0	35.2	38.4	41.3	42.8	43.8	45.9	47.5	48.5
10	0.17	44.9	48.3	51.6	54.5	56.0	56.9	58.9	60.4	61.2
15	0.25	52.7	56.1	59.2	62.0	63.4	64.3	66.1	67.3	68.0
20	0.33	58.3	61.6	64.5	67.0	68.4	69.1	70.8	71.9	72.4
30	0.50	65.9	68.9	71.5	73.7	74.9	75.5	76.9	77.8	78.1
45	0.75	73.2	75.7	78.0	79.9	80.8	81.3	82.4	83.1	83.3
60	1	78.0	80.3	82.3	83.9	84.7	85.1	86.0	86.6	86.7
120	2	88.6	90.2	91.6	92.8	93.3	93.6	94.1	94.4	94.4
180	3	94.1	95.6	96.8	97.7	98.2	98.4	98.9	99.0	99.0
240	4	97.8	99.2	100.4	101.3	101.8	102.0	102.4	102.6	102.6
300	5	100.6	102.1	103.3	104.3	104.7	105.0	105.5	105.7	105.7
480	8	106.4	108.3	109.9	111.2	111.8	112.2	112.8	113.2	113.2
600	10	109.3	111.5	113.4	114.9	115.7	116.2	117.0	117.5	117.7
1200	20	119.2	123.3	126.9	130.0	131.6	132.5	134.4	135.7	136.3

Power / W per cell

Duration		End of Discharge Voltage								
Mins	Hours	1.85	1.80	1.75	1.70	1.67	1.65	1.60	1.55	1.50
2	0.03	997.7	1110.4	1218.3	1318.0	1372.2	1405.6	1478.0	1532.1	1565.9
5	0.08	727.7	791.0	849.5	901.4	928.7	945.0	979.0	1002.0	1013.3
10	0.17	516.4	551.3	582.7	609.8	623.7	631.8	648.2	658.4	662.2
15	0.25	407.5	430.7	451.2	468.6	477.4	482.6	492.6	498.6	500.2
20	0.33	339.6	356.4	371.2	383.6	389.8	393.4	400.3	404.2	405.1
30	0.50	257.8	268.1	277.1	284.5	288.2	290.2	294.2	296.3	296.5
45	0.75	191.9	198.0	203.2	207.5	209.6	210.7	212.9	213.9	213.9
60	1	154.0	158.1	161.6	164.4	165.8	166.5	167.9	168.6	168.6
120	2	88.0	89.5	90.8	91.8	92.3	92.6	93.0	93.2	93.2
180	3	62.4	63.3	64.1	64.7	64.9	65.1	65.4	65.5	65.5
240	4	48.7	49.3	49.9	50.3	50.5	50.6	50.8	50.9	50.9
300	5	40.0	40.6	41.0	41.4	41.5	41.6	41.8	41.9	41.9
480	8	26.4	26.8	27.1	27.4	27.6	27.6	27.8	27.9	27.9
600	10	21.6	22.0	22.3	22.6	22.7	22.8	22.9	23.0	23.1
1200	20	11.6	12.0	12.3	12.5	12.7	12.7	12.9	13.0	13.0

